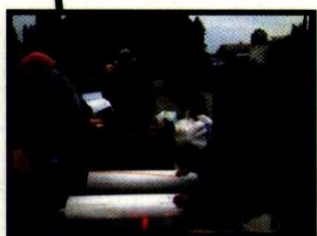
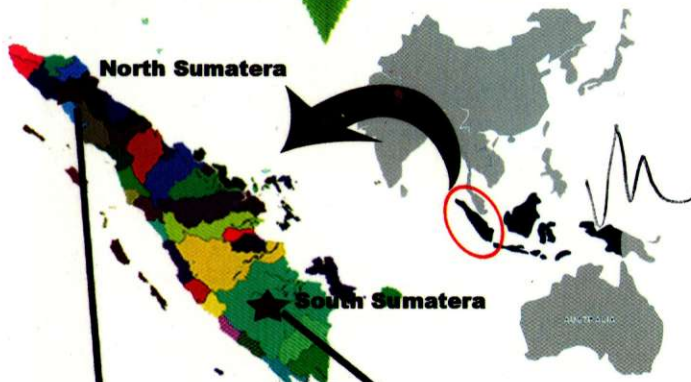




Ministry of Environment – JICA Project:



CH₄ Sampling in industrial WWTP in North Sumatera



Waste Composition Survey in South Sumatera



**FOR FURTHER INFORMATION
PLEASE CONTACT:**

**Deputy Ministry for Control of Environmental
Degradation and Climate Change
Jl. D.I. Panjaitan Kav. 24, Kebon Nanas
Jakarta 13410**

Phone : +62-21-85904923

Fax : +62-21-8517164

E-mail : signcenter@menlh.go.id



**Ministry of Environment
Republic of Indonesia**

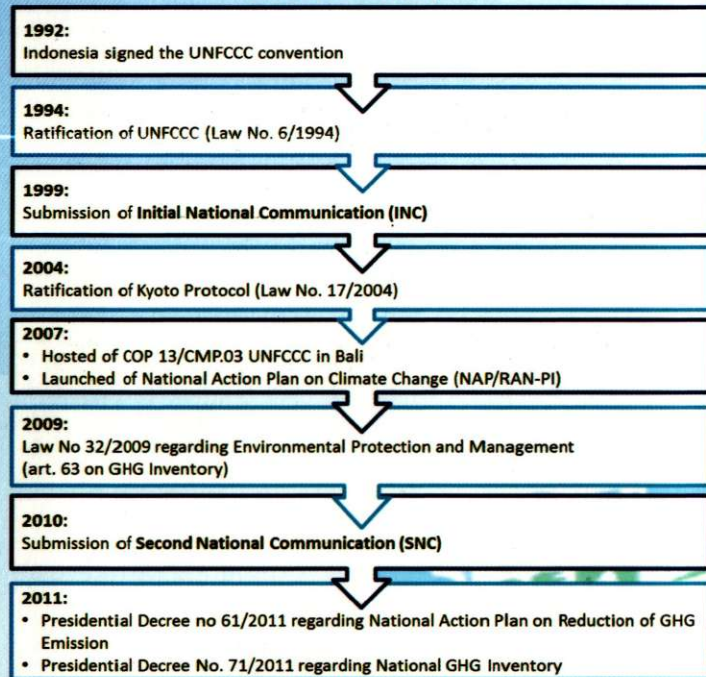
NATIONAL GHG INVENTORY

NATIONAL GHG INVENTORY

The serious impact of climate change has already occurred in Indonesia and will likely be worse due to further unsustainable development and human-induced climate change.

In despite of a non Annex I country under the UNFCCC and Kyoto Protocol, Indonesia takes actions to overcome climate change seriously, such as GHG inventory and mitigation. The actions began in 1992 and has developed every year to improve the national system for Indonesia (Fig. 1).

Fig. 1 Milestones of Policy and Implementation of GHG Inventory



National GHG Inventory aims to provide regular information on:

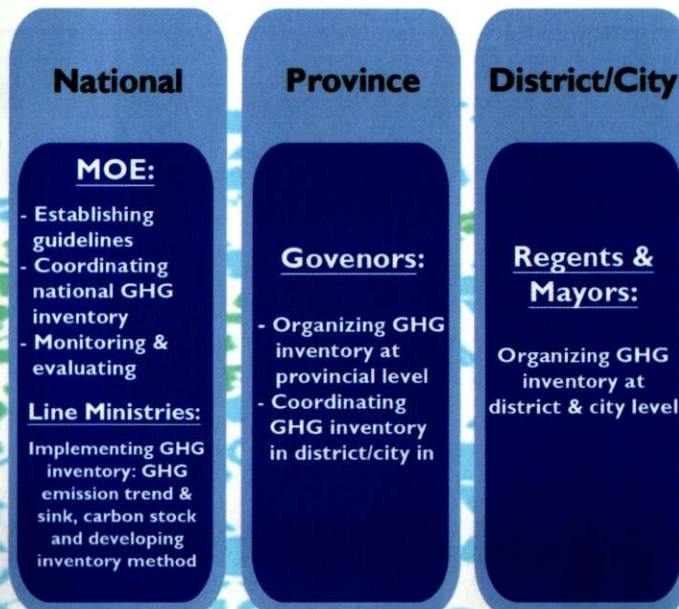
- (1) Level, status and GHG emission and removal, including carbon stock at national, province and district/city levels.
- (2) GHG emission reduction achievement of national climate change mitigation action.

Indonesia had submitted two GHG inventories (INC and SNC). In the INC, GHG emissions for the year 1990 were estimated, and in the SNC, the time series for years 2000 to 2005 were estimated. Currently Indonesia prepares the first Biennial Update Report (First BUR) and will submit to UNFCCC in 2014. The time series of estimated GHG emission will be from 2006 to 2010. In 2016, Indonesia will submit the Second BUR and Third National Communication (TNC).

Presidential Decree No. 71/2011

Based on Law No. 32/2009, central government, provincial and district/city were assigned to implement GHG inventory. This mandate further regulated under Presidential Decree No. 71/2011. This Decree defines responsibilities among related institutions for Energy, IPPU, Agriculture, Forestry and Land Use (AFOLU) and Waste sectors.

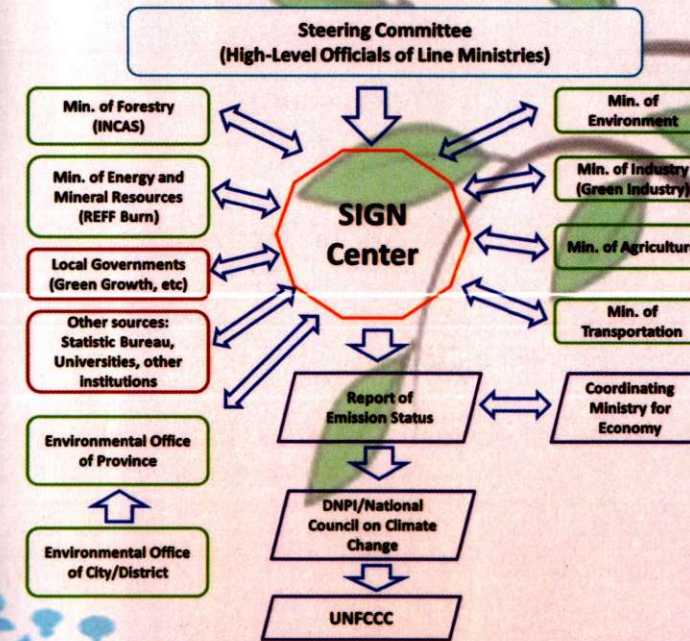
Fig. 2 Responsibility for Every Government Level



SIGN CENTER

SIGN center was established by Ministry of Environment Indonesia under Presidential Decree No. 71/2011 to coordinate GHG inventory implementation in Indonesia with the following mechanism:

Fig. 3 Mechanism of SIGN Center



Activities of SIGN:

- Operationalize coordination mechanism of inventory among line ministries and provinces.
- Disseminate GHG inventory guidelines for Energy, IPPU, AFOLU and Waste.
- Provide capacity building for ministries and local government
- Provide annual inventory report.