

Potensi dan Daya Tarik

Kawasan Bantimurung memiliki nilai keindahan alam yang tinggi. Variasi daya tarik sangat beragam; air terjun, gua-gua serta flora dan faunanya. Daya tarik utamanya adalah air terjun Bantimurung, yang menjadi pusat perhatian pengunjung, selain itu juga terdapat aneka jenis kupu-kupu yang merupakan primadona Bantimurung.

"The Magnificent Butterfly" *Papilio androcles* (sekarang *Graphium androcles*) salah satu jenis kupu-kupu Swallow tailed terbesar dan terjarang ditemukan, menjadi ikon Bantimurung.

Kondisi alam Bantimurung cukup berpotensi untuk kegiatan pariwisata maupun penelitian. Beberapa kegiatan yang dapat dilakukan pengunjung di dalam kawasan antara lain; menikmati panorama alam, wisata tirta (mandi di air terjun, berenang), flying fox, penelusuran gua (gua batu dan gua mimpi), tracking dan mengamati flora-fauna.



Potential and attractiveness

Bantimurung has a high value of natural beauty. You will find various attractions e.g. waterfall, forest vegetation, caves, and other flora and fauna. The main attraction in Bantimurung is the waterfall which become the centre of attraction for visitors.

The "Magnificent Butterfly", *Papilio androcles* (now *Graphium androcles*), one of the biggest and the rarest species of the swallow tailed butterfly, become the icon of Bantimurung.

The nature of Bantimurung is suitable either for tourism and research. Various tourism activities can be done e.g. enjoying the scenery, water tourism (bathing and swimming in the waterfall), flying fox, tracking the caves (batu cave and mimpi cave), tracking, and observing flora and fauna.



BALAI TAMAN NASIONAL BANTIMURUNG BULUSARAUNG
Jln. Poros Maros Bone Km.12, Bantimurung, Maros,
Sulawesi Selatan, Indonesia, Kotak Pos 4747,
Telp: 62-411-3880252, Fax : 62-411-3880139,
Web site: www.tn-babul.org,
Email: tn.babul@gmail.com

Kawasan Wisata Bantimurung

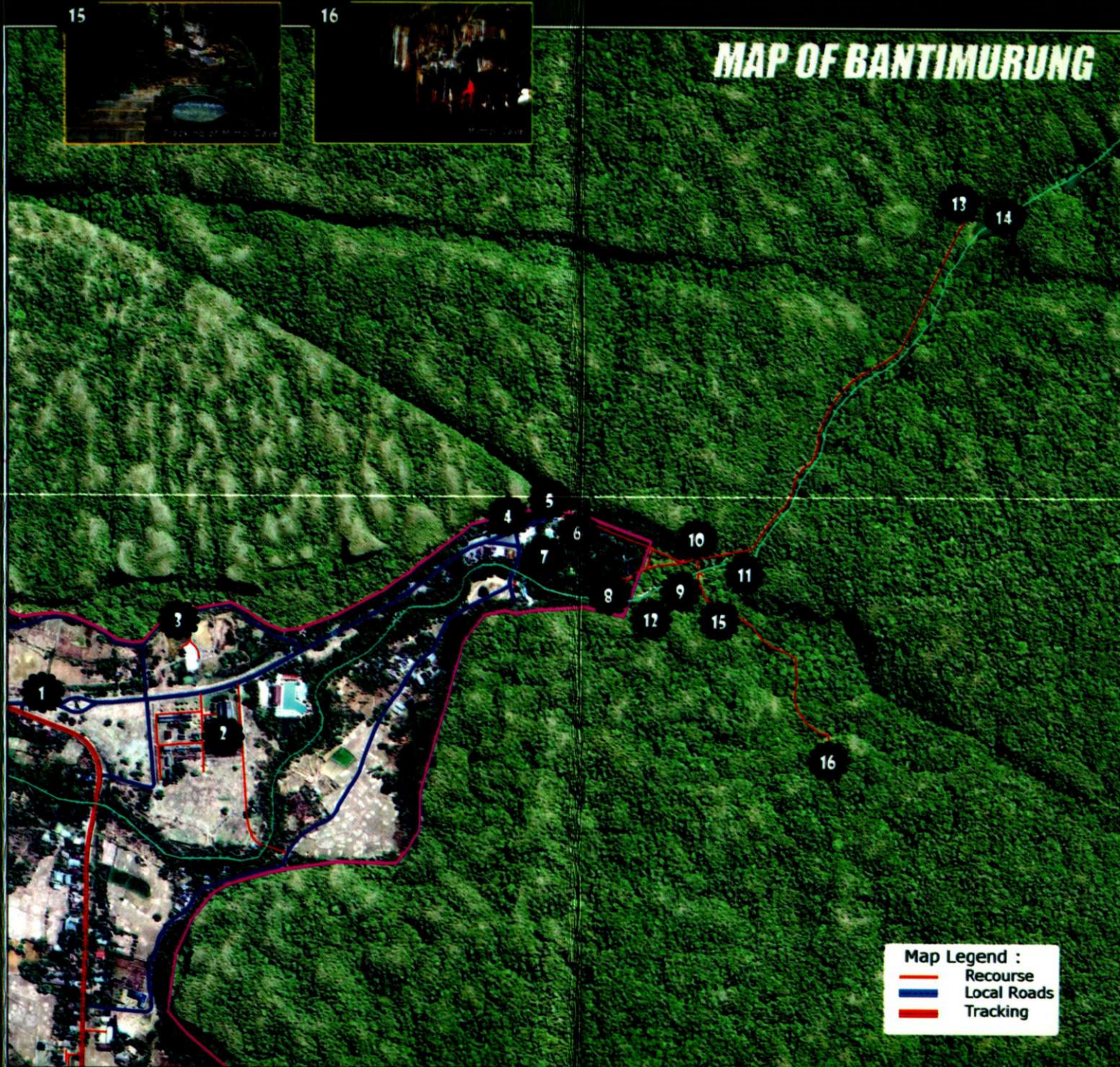


STOP
KORUPSI

DIPA 2306.067.012-A.521219



MAP OF BANTIMURUNG



Map Legend :
 — Recourse
 — Local Roads
 — Tracking

